

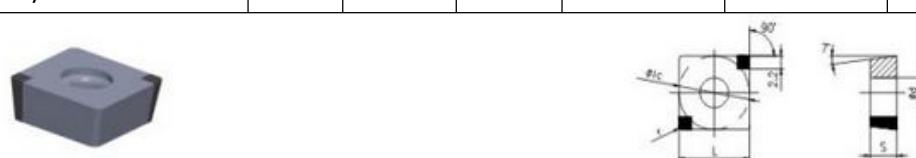




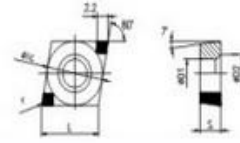
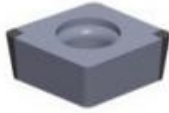


**Solid /Soldering PCBN Inserts**

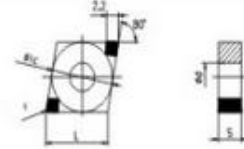
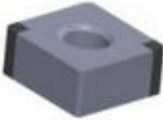
**Thoroughly brazed pcbn inserts**

						
Model	Size (mm)					standard of blade
A NSI/ ISO	L	i.c	s	d	r	
SNGA431/SNGA120404-8S	12.7	12.7	4.76	5.16	0.4	T01020,T02020 S01020,S02020
SNGA432/SNGA120408-8S	12.7	12.7	4.76	5.16	0.8	
SNGA433/SNGA120412-8S	12.7	12.7	4.76	5.16	1.2	
						
Model	Size (mm)					standard of blade
ANSI / ISO	L	i.c	s	d	r	
SNGA431/SNGA120404-4S	12.7	12.7	4.76	5.16	0.4	T01020,T02020 S01020,S02020
SNGA432/SNGA120408-4S	12.7	12.7	4.76	5.16	0.8	
SNGA433/SNGA120412-4S	12.7	12.7	4.76	5.16	1.2	
						
Model	Size (mm)					standard of blade
ANSI/ ISO	L	i.c	s	D 1/D2	r	
SCGW32.51/ SCGW09T304-2S	9.7	9.525	3.97	4.4/6	0.4	T01020,T02020 S01020,S02020
SCGW32.52/ SCGW09T308-2S	9.7	9.525	3.97	4.4/6	0.8	
SCGW09T312-2S	9.7	9.525	3.97	4.4/6	1.2	
						
Model	Size (mm)					standard of blade
ANSI/ ISO	L	i.c	s	d	r	
TNGA331 / TNGA 160404-6S	16.5	9.525	4.76	3.81	0.4	T01020,T02020 S01020,S02020
TNGA332 /TNGA 160408-6S	16.5	9.525	4.76	3.81	0.8	

TNGA333 /TNGA 160412-6S	16.5	9.525	4.76	3.81	1.2	
TNGA431/ TNGA 220404-6S	22	12.7	4.76	5.16	0.4	
TNGA432/ TNGA 220408-6S	22	12.7	4.76	5.16	0.8	
TNGA433/ TNGA 220412-6S	22	12.7	4.76	5.16	1.2	
						
Model	Size (mm)					standard of blade
ANSI/ ISO	L	i.c	s	d	r	
WNGA 060404	6.5	9.525	4.76	3.81	0.4	T01020,T02020 S01020
WNGA 060408	6.5	9.525	4.76	3.81	0.8	
WNGA 060412	6.5	9.525	4.76	3.81	1.2	
WNGA431/WNGA080404	8.7	12.7	4.76	5.16	0.4	
WNGA 432/WNGA080408	8.7	12.7	4.76	5.16	0.8	
						
Model	Size (mm)					standard of blade
ANSI/ ISO	L	i.c	s	d	r	
DNGA331/DNGA110404	11.6	9.525	4.76	3.81	0.4	T01020,T02020 S01020,S02020
DNGA332/DNGA110408	11.6	9.525	4.76	3.81	0.8	
DNGA333/DNGA110412	11.6	9.525	4.76	3.81	1.2	
DNGA431/DNGA150404	15.5	12.7	4.76	5.16	0.4	
DNGA432/DNGA150408	15.5	12.7	4.76	5.16	0.8	
DNGA433/DNGA150412	15.5	12.7	4.76	5.16	1.2	
DNGA441/DNGA150604	15.5	12.7	6.35	5.16	0.4	
DNGA442/DNGA150608	15.5	12.7	6.35	5.16	0.8	
DNGA443/DNGA150612	15.5	12.7	6.35	5.16	1.2	
						
Model	Size (mm)					standard of blade
ANSI/ ISO	L	i.c	s	d	r	
TNGA431/TNGA220404	22	12.7	4.76	5.16	0.4	T01020,T02020 S01020,S02020
TNGA 432/TNGA220408	22	12.7	4.76	5.16	0.8	
TNGA433/TNGA 220412	22	12.7	4.76	5.16	1.2	
TNGA 433/TNGA220416	22	12.7	4.76	5.16	1.6	



Model	Size (mm)					standard of blade
ANSI / ISO	L	i.c	s	D 1/D2	r	
CCGW32.51 / CCGW09T304	9.7	9.525	3.97	4.4/6	0.4	T01020,T02020 S01020,S02020
CCGW32.52 / CCGW09T308	9.7	9.525	3.97	4.4/6	0.8	
CCGW 09T312	9.7	9.525	3.97	4.4/6	1.2	
CCGW 431 / CCGW 120404	12.9	12.7	4.76	5.5/7.5	0.8	
CCGW 432 / CCGW 120408	12.9	12.7	4.76	5.5/7.5	1.2	
CCGW 120412	12.9	12.7	4.76	5.5/7.5	0.8	



Model	Size (mm)					standard of blade
ANSI / ISO	L	i.c	s	D	r	
CNGA 431/CNGA 120404	12.9	12.7	4.76	5.16	0.4	T01020,T02020 S01020,S02020
CNGA 432 /CNGA120408	12.9	12.7	4.76	5.16	0.8	
CNGA 433/CNGA 120412	12.9	12.7	4.76	5.16	1.2	

**Henan More SuperHard Products Co.,Ltd**  
[www.moresuperhard.com](http://www.moresuperhard.com)